

EEO Progress Report **2014-2015 School Year** *Eleuthera and Harbour Island*

Exceptional Education Outreach (EEO) is a non-profit special education and literacy project that operates in the Bahamian Family Islands. EEO's **mission** is to partner with the Bahamian Ministry of Education to create a sustainable special education program for children across Eleuthera and Harbour Island.

The project's **vision** for Harbour Island and Eleuthera is to ensure that children with special needs have access to innovative educational programs and materials to help them reach their full academic and personal potential. Through collaborations with Bahamian and American educational organizations, EEO strives to equip local teachers, parents, and volunteers with materials and skills to assess students and remediate learning challenges.

[IN THE BAHAMAS:](#)
PO Box EL 27194
Harbour Island, Bahamas
Phone: 242-333-2006

[IN THE US:](#)
650 NE 67 St.
Miami, FL. 33138
Phone: 305 389-7485

Email: EEOBahamas@yahoo.com
www.EEOBahamas.org

Letter from the Director

From its humble beginnings 15 years ago on a bench under a shade tree at Harbour Island All Age School, where I sat tutoring struggling readers, I had a vision for what could be and searched out Ministry administrators and local educators and volunteers to allow me to work alongside school communities. Since those days of roadblocks, challenges and carving out a few feet of space to work together, Exceptional Education Outreach. EEO has emerged as a comprehensive program that empowers students and communities to recognize and address learning challenges facing so many. EEO has helped hundreds of our Bahamian children learn to read, write and overcome his or her disabilities so that they may contribute more actively and proudly to school and society. The work we do inspires a feeling of working together as a community and despite challenges and complications we are trying our hardest to continue the movement.

Our goal is to create a sustainable program that builds capacity within the communities to ensure that the teachers in local schools can continue reaching the children with various needs. Since the beginning, so many people have dedicated hours, weeks or years of their life to our mission of believing that **all children deserve the chance to reach his or her potential**. Several EEO teachers have been fully involved in our work for more than five years. Seminar speakers and therapists return to donate their valuable time year after year because they too see what we are striving to accomplish.

As a parent of three young and energetic boys, I have a different perspective than I did more than a decade ago when EEO's roots first started to grow. I am even more impassioned to search out ways that we might support the work and push past the difficulties of raising sufficient funds to maintain adequate support of centers and workshop offerings across the district. We are a global community and now more than ever we need to stay focused on educating the next generation of Bahamians so that they will be prepared to take on opportunities. Even when the world might seem a little upside down, there are still critical educational needs in this community.

I'm unbelievably grateful for your continued support and care. Without generosity such as yours, we would not be able to see the growth you will read in this report nor plan for future opportunities. I hope you feel motivated to support and help spread the word to keep EEO's programs running on Eleuthera and Harbour Island. The spark we see in one child's eye when he starts to believe in himself is worth whatever we are able to give

With gratitude,
Lang Hudepohl
EEO Founder Director



Gathered for a moment of thought and gratitude with Toby Dunn and Will Simmons after the first collaboration between EEO, Harbour Island Day Nursery and Space 2 Create at the benefit held at Ocean View Club on March 29, 2015.

Table of Contents

- A. Goals of EEO
- B. Project History
- C. Professional Assistance
- D. EEO Events During 2012-2013 School Year
- E. Educational Philosophy
- F. Accomplishments at a Glance Up to 2013
- G. Testing
- H. Staff, Seminar Presenters, Therapist Visits, Board Members
- I. Improvement Charts
- J. Support
- K. Expenses for 2015 and Budget for Upcoming School Year
- L. Goals for upcoming year



EEO seminar presenter, Emily DeLiddo, modelling reading and writing instruction. She later shared strategies with a seminar of over 100 Bahamian educators in Savannah Sound.

“It was amazing to see the change in my daughter after her hearing loss was addressed and she started working with EEO teacher every week. She is much more willing to try. She loves the books she takes home and is proud of her.

So am I...”

– Parent from Buff, Eleuthera

A. Goals of Exceptional Education Outreach-Eleuthera and Harbour Island

- Assess physical and neurological impairments that may be interfering with a child's academic progress and provide availability for needed continuous care.
- Conduct daily, in-school, special education sessions with special needs children. *These challenges include low cognitive functioning, Pervasive Developmental Delays (PDD), Attention Deficit Hyperactive Disorder (ADHD), learning disabilities, mild to severe retardation, apraxia, severe processing delays, hearing and speech problems.*
- Build local capacity through *monthly training seminars* that integrate literacy-building and teaching strategies for working with children with special needs.
- Establish, equip and maintain special education *resource rooms* across Eleuthera and Harbour Island with books, computers, specialized learning aides and supplies for use in daily pull-out sessions with small groups of students needing individualized instruction.
- Assemble specialized *professional libraries* in each district of Eleuthera to aide in the professional development of parents, teachers, and volunteer community members. These rooms will be complete with professional journals, textbooks, instructional materials and best practice videotapes.
- *Train local community volunteers* to assist with in-school and after-school tutoring sessions, and summer school sessions and assist with needed school supplies and books.
- Initiate an *on-going learning community* in which teachers, parents, and the general public recognizes and consistently addresses the challenges faced by special needs students.
- Collaborate with other non-profits on Eleuthera such as One Eleuthera and Methodist Habitat in implementing long-term strategic plans and for Eleuthera's successful future in education.
- Collaborate with the Bahamian Ministry of Education in creating similar special education programs in other Family islands with offered support of materials, books, therapist visits, assessments and training.

The above efforts (i.e. training, gathering professional resources, establishing a professional network, and providing hands-on assistance) are intended to foster and sustain an independent, student-supportive, special education system in Eleuthera. The ultimate goal of this undertaking is to establish a knowledge-base whereby the responsibility for the education of children with special needs will continue on the local level, while at the same time forging links with stateside resources, on an as-needed basis.

"Thank you for working with our students as it makes a great improvement in their motivation!"

Ms. Petty, Principal

B. Project History

In 1998 under a tree in the yard of Harbour Island, All Age School, a special education and literacy outreach program was implemented by volunteers on Harbour Island. Within the following two years, this program spread to schools in North Eleuthera. Greater community awareness, increasing support from the Bahamian Ministry of Education, and the uncovered critical need, have resulted in the expansion of special education resource rooms reaching to South Eleuthera. EEO has outfitted these rooms within the public schools with specialized books and materials, specific to students with learning challenges. In addition, professional libraries on the island are beginning to be filled with textbooks, journals, and best practice videos to provide access to the latest information for the local communities.

EEO also recognized the need for professional assistance by doctors and therapists. All students in the EEO program as well as others with possible concerns have their ears tested for hearing deficiencies. Other assessments if needed include neurological evaluations (and EEG if needed), vision screenings, psychological evaluations, testing by Occupational Therapists and Physical Therapists.

In 2000, EEO also started a series of Literacy special education seminars and parent workshops to assist with training local teachers, parents and volunteers. Speakers from Nassau and abroad have visited to share updated strategies for special education and literacy needs of local students in the mainstreamed classes.



EEO has collaborated over the last 15 years with the Bahamian Ministry of Education and Special Education services in Nassau to create a sustainable special education program for the Family Islands.

C. Professional Assistance

Children recommended to the EEO program by school faculty receive hearing screenings. Those children exhibiting problems with these screenings are subsequently seen by a hearing specialist contracted by EEO. If further attention is needed, students are referred to professional medical care in Nassau. EEO has provided assistance, in the form of Fast Ferry tickets, to families who could not afford the trip to Nassau to bring their child to the doctor. Auditory and visual perception assessments continue to be conducted in other settlements down the island.

For those children who have exhibited severe learning and emotional difficulties, EEO has engaged Dr. Barrett and Dr. Edwin Demeritte from Nassau to help assess and identify new strategies for learning and behavior management. Dr. Barrett, child psychologist, has met with students and their parents or guardians, providing them new techniques and perspectives on how to deal with learning and emotional problems. Dr. Demeritte, pediatric neurologist, makes semesterly visits with an interdisciplinary team of specialists. He has provided in depth evaluations (EEG's for some) and professional reports with strategies for teachers and parents for over 50 children in need of critical attention. EEO underwrites 90% of the costs of these visits.

There are several children across Eleuthera who experience learning challenges and social anxiety due to speech problem. To further investigate and assist these students, EEO has organized visits from speech therapists Sharon Clarke and Paula Bowleg from Nassau. They provided thorough evaluations and met with parents to provide recommendations and strategies on improving speech problems.

[D. EEO Events: 2014-2015 School Year](#)

September 2014 – EEO opens 5 centers for 2014-2015 school year.

EEO served 137 students in the following schools:

*North Eleuthera Primary School, Bluff
Harbour Island All Age School Primary
Harbour Island All Age School Secondary
Governors Harbour Primary School
PA Gibson Primary (in Hatched Bay)
Tarpum Bay Primary School
Center for Exceptional Learners



*(*Founded by EEO in collaboration with Ministry of Education and is now staffed by MOE teachers)*

September 2014 – Emily DeLiddo, EEO Board Member and Columbia University Literacy Consultant, provided staff development workshops and academic evaluation of all EEO literacy programs. Literacy workshops for staff of: Harbour Island All Age School, Governors Harbour Primary and North Eleuthera Primary

September 2014 – Literacy Week at HIAAS. EEO teacher, Kathy Brown, collaborated with 4th grade teachers and presented at literacy assembly.

October 2014 – Hearing Screening for EEO students from all 6 Centers conducted.

October 2014 – Professional Development Day at PA Gibson Primary in Hatched Bay. EEO teacher and co-director, Gaby Hudson, conducted a workshop on learning challenges in the mainstreamed classroom and led discussion after viewing the film: “It Can’t Be That Hard,” by Rick Lavoie

November and December 2014 – Hearing screenings provided in school-wide project for Central Eleuthera High school with volunteer Sandra Sainvil. A total of 274 students were tested.

February and March 2015 – Westchester University Students majoring in Special Education assisted EEO students giving them one -on -one help and collaborated with EEO programs existing at Governors Harbor Primary.

January 2014- February 2014 – EEO performed hearing test for all new students.

March 2014 – Tarpum Bay primary workshop held with presentation and discussion led by EEO teacher, Joann Cambridge.

March 2015 –40 EEO students rode a bus all the way from North Eleuthera and Bluff, participated in this year’s "All That Jazz” Festival at Haynes Library in Governor’s Harbour. It was truly an unforgettable first-time experience for EEO students interacting with musicians and instruments.

March 2015 –Benefit and silent auction to support three educational organizations for the children of Harbour Island at Ocean View. Inaugural collaborative effort between Harbour Island Day Nursery, Space 2 Create and EEO. The elegant evening helped raise awareness and close to \$50,000 to support the valuable work of these three groups.

May 2015 – Individual building principal meetings with EEO co-director, Gaby Hudson, to strategize help for students and EEO programs on Eleuthera and Harbour Island.

June 2015 – Many children supported in EEO classes received certificates for improvement in Literacy at award ceremonies in schools.

June 2015 – Summer school for EEO students held at Harbour Island All Age School in collaboration between the Bahamian Ministry of Education and EEO staff.

June 2015 – EEO co-director Gaby Hudson along with team of therapists led by Dina Whittaker, conducted Speech and Occupational Therapy evaluations for over 30 EEO students. Strategies and individual counseling will be given to parents and teachers that work with these students for the incoming school year 2015-16.

July 2015 – EEO staff will attend Bahamian Ministry of Education workshops in Nassau. EEO Director Lang Hudepohl will engage in collaborative meetings with government representatives to further plan for sustainable special education programs for Eleuthera and Harbour Island.

***2014-2015 year 23 Students mainstreamed.
182 in past 5 Years***



Co-director Gaby Hudson with some of the upper grade students she works with from Harbour Island All-Age

E. EEO's Educational Philosophy.

EEO believes that every child deserves the chance to reach his /her personal potential. We strive to build their self-esteem and help children feel motivated to learn. We create opportunities for success with individualized instruction and small group activities. Through multi-sensory, innovative strategies and positive learning experiences, EEO creates a safe environment where they are aware of personal goals and are challenged to improve. Learning is approached in multi-sensory ways and with a multi-modality approach. We incorporate games, music and movement to inspire the students.

Educators and learning theorists agree that when students take ownership of their personal educational goals, their success rates increase. Academic success translates into improved confidence, positive behaviour, and a greater thirst for learning—qualities that will enhance a student's life beyond his school years.

EEO also sees the importance in educating the parents and caregivers. Our visiting therapists and seminar presenters involve and train the parents of the students they work with. Furthermore, EEO holds parent workshops, afterschool sessions and provides tools for continued at-home support.

EEO has seen meaningful changes in our student's motivation and their success in reading. We believe this impact creates positive changes in their communities.

*"Tremendous progress from the beginning of school when some students couldn't read at all!"
Mrs. Thompson, Grade 2*



Harbour Island All Age
Primary students making
words

F. Accomplishments at a Glance up to 2015 school year:

- EEO underwrites visits by an interdisciplinary team including an audiologist, a paediatric neurologist, a speech therapist, an occupational therapist, a physical therapist and a child psychologist. There have been 14 experts that have volunteered their services to EEO.
- EEO has had special education support established within 11 schools since 2000 and has equipped these resource rooms that EEO teachers work in during the school hours.
 - EEO served students in the following schools:
 - *Gregory Town Primary School*
 - *North Eleuthera Primary School, Bluff*
 - *Harbour Island All Age School (High School and Primary)*
 - *James Cistern Primary School*
 - *Rock Sound Primary School*
 - *Governors Harbour Primary School*
 - *Emma Cooper primary (Palmetto Point)*
 - *PA Gibson Primary (Hatchet Bay)*
 - *Tarpum Bay Primary School*
 - *Weymss Bight Primary*
 - *Centre for Exceptional Learners, Governors Harbour**
 - *(*Staffed by Ministry of Education)*
- Since its start, EEO has organized 53 professional seminars with over 250 Ministry of Education teachers attending. The Bahamian Ministry of Education, Eleuthera District endorses these seminars and has mandated a half-day of school for certain EEO's seminars so that all teachers may learn valuable new skills about increasing literacy and special education strategies.
- EEO sponsored EEO and Ministry of Education teachers to visit Nassau to attend Special Education workshops and visit Academia School as part of professional development efforts.
- Approximately 1,500 students from all districts of Eleuthera have been given a hearing screening, and audiologist has preformed follow up testing for over 75 students with hearing loss, three hearing aides have been donated and medical procedures to help hearing problems have been underwritten by EEO. Upon recommendations of teachers and parents, 200 students have been given a vision screening.
- Parent workshops have been conducted in all three districts of Eleuthera with over 200 parents having attended. EEO representatives also make monthly presentations at school PTA meetings. Transportation is provided through EEO from the settlements in the Central and South of Eleuthera.
- EEO After School Programs existed for over 50 students of Harbour Island All Age School and Governor's Harbour Primary communities

- For community awareness, EEO distributes a newsletter to all settlements in Eleuthera. EEO has been featured in Nassau Guardian and the Eleutheran. Two local websites that have also featured write ups around EEO activities.
- EEO collaborates with the Bahamian Ministry of Education in establishing similar programs in other Family Islands. EEO is committed to assisting with the development of the first special education system for the Family Islands and creating sustainable programs for the future.
- Intensive Spring/Summer Programs by educators from the Stephen Gaynor School, New York City and therapists visited since 2011 at Hatchet Bay Primary and Governors Harbour Primary.
- Since 2009, EEO has updated and maintained an On-Line Training Campus to build local capacity and connect special education efforts to other Family Islands. EEO incorporates videos and information from all of our guest speakers and offers free access to teachers and volunteers. *Professional development credit is recognized.*

“Thank you for working with our students as it makes a great improvement in their motivation!”

Ms. Petty, Principal

G. Testing

EEO performs assessments from time-tested sources to identify specific skill gaps in a child’s learning. Recognizing that there are various learning styles, EEO structures Individual Education Plans (IEPs) and learning activities to meet the individual needs of each child.

Students in the EEO program have been tested using the following screenings:

- Dolch Assessment
- Wepman Auditory Discrimination
- Audiogram Screening
- Slosson Oral Reading Test
- Eckwell Shanker Reading Assessment (in depth diagnostic phonemic awareness and phonics assessment)



Former EEO student Sonya working at North Eleuthera airport who credits much of her success to the supports received through EEO.

H. EEO Staff, Seminar Presenters, Therapist Visits, Board Members



EEO Staff

- Mrs. Lang Hudepohl, EEO Founder and Executive Director
- Mrs. Gabriella Hudson, EEO Teacher -HIAAS and Co-Director
- Mrs. Joann Cambridge, EEO Teacher- Tarpum Bay Primary
- Ms. Maureen Keogh, EEO Teacher- Governors Harbour Primary School
- Mrs. Kathy Brown, EEO Teacher - Harbour Island All Age School
- Ms. Jennie Charles, EEO Teacher- Harbour Island All Age School and North Eleuthera Primary
- Ms. Wendy Gans, EEO Teacher – PA Gibson Primary School

The following individuals worked or volunteered with EEO during 2014-2015 school year:

- Mr. Bill Holland, Teacher- Ministry of Education Teacher- Center for Exceptional Learning in Governors Harbour
- Lynn Noble, Volunteer- Harbour Island All Age School
- Mr. Kelly, After-School Volunteer – Harbour Island All Age School

Other Visiting Volunteers:

- Shannon Fastzkie, Sharon and David Jacobs worked in combined effort to assist Alexia Johnson , a deaf student , in the acclimation to cochlear implant.
- Benita Etienne, a former EEO student reads with students in After School program at HIAAS and assists with school wide hearing assessments in Central Eleuthera High school
- Ella Griffith and her family brought books and read to students at Harbour Island EEO center
- Sonja Castel worked with EEO students individually from October to May at Harbour Island All Age School EEO program.
- Sandra Sainvill assisted EEO in conducting hearing screenings.

*"I didn't know I could learn with songs to help me understand and remember.
I get it now. "*

*-EEO Harbour Island All Age High school student
that improved three reading grade levels in one year*

Seminar Presenters

The following individuals were participants in the seminar series hosted by Exceptional Education Outreach. Teachers attend seminars across Eleuthera and Harbour Island as well as interested community members. Often Parent Workshops are also hosted in conjunction with their visit.

To integrate the special education outreach to other Family Islands, EEO also covers airfare for special educators in other Family Islands to attend.

- Dr. Judith Gold, Project LEARNS , Bank Street College, NY
- Roxane Contreras , MindUP Trainer, Miami, FL
- Ms. Emily DeLiddo, Teachers College, Columbia University, NY
- Ms. Julia Borders, Stephen Gaynor School , NY
- Ms. Alex Bermel , Stephen Gaynor School, NY
- Ms. Asti Spentelli, Stephen Gaynor School, NY
- Mrs. Nancy Hudepohl, Bilingual Education PHD, San Antonio ,Texas
- Dr. Marion Crayton, Special Ed. Coordinator, St. George's County,MD
- Dr. Jodi Marshall, Reading Specialist, University of Miami
- Dr. Sharon Kossacks, Professor, Florida International University
- Dr. Judy Cohen, Elementary Education Professor, Florida International University
- Dr. Timothy Barrett, Child Psychologist, Nassau
- Dr. Wavell, Psychologist , Nassau
- Mrs. Gail Wisdom, Director, Academia School, Nassau
- Mr. Blair Cochran, Literacy Program Coordinator, Dade County Public Schools
- Mrs. Carolyn Rasmussen, Pearson Learning Group, Florida
- Ms. Jennifer Alexiou, Speech therapist, Nassau
- Mr. William Holland, Special Educator, Eleuthera
- Dr. Alison Shook, Reading Specialist, University of Miami, Florida
- Ms. Lang Fincher, Special Educator, Harbour Island
- Dr. Demeritte, Pediatric Neurologist, Nassau
- Mrs. Susy Siel, Librarian /Media Specialist, Wisconsin
- Dr. Sharon Clarke, Speech Therapist, Nassau
- Dr. Paula Bowleg, Speech Therapist , Nassau
- Dr. Tiffany North, Reading Specialist, Nova University, FL
- Dr. Claire Verden, Special Education Department Head ,Westchester University, PA

Visiting Medical Professionals

These professionals have performed evaluations on several students in the EEO program who require additional medical assessment beyond what EEO clinicians can do. Initial consultations have been followed up with recommendations and additional visits to assess progress.

- Psychologist, Dr. Barrett, Nassau
- Hearing specialist, Dr. Benabe, Nassau
- Pediatric Neurologist, Dr. Demeritte, Nassau
- Audiologist, Kim Scrivin, Nassau
- Occupational Therapist, Natasha Bravo, Creative Learning Center, Miami, FL
- Physical Therapist, Andrea Hayward, Miami, FL
- Pediatric Nurse, Michelle Hanna, Nassau
- Infant Stimulation, Cynthia Stanko, Nassau
- Occupational Therapist, Vanessa Williams, Nassau
- Occupational Therapist, Andrea Moss, Nassau
- Speech Therapist, Dr. Sharon Clarke, Nassau
- Speech Therapist, Dr. Paula Bowleg, Nassau
- Dr. Ann Helmus, Child Psychologist
- Dr. Claire Verden, Special Education Department Head, Westchester University, PA

EEO Board Members

Ms. Emily DeLiddo
Mrs. Lang Hudepohl
Ms. Karla Cosgriff
Mr. William Simmons
Mrs. Gabriella Hudson

Mrs. Gretchen Jackson
Ms. Jane Fincher
Mrs. Melissa Sellars
Mrs. Elizabeth Easton-Montes

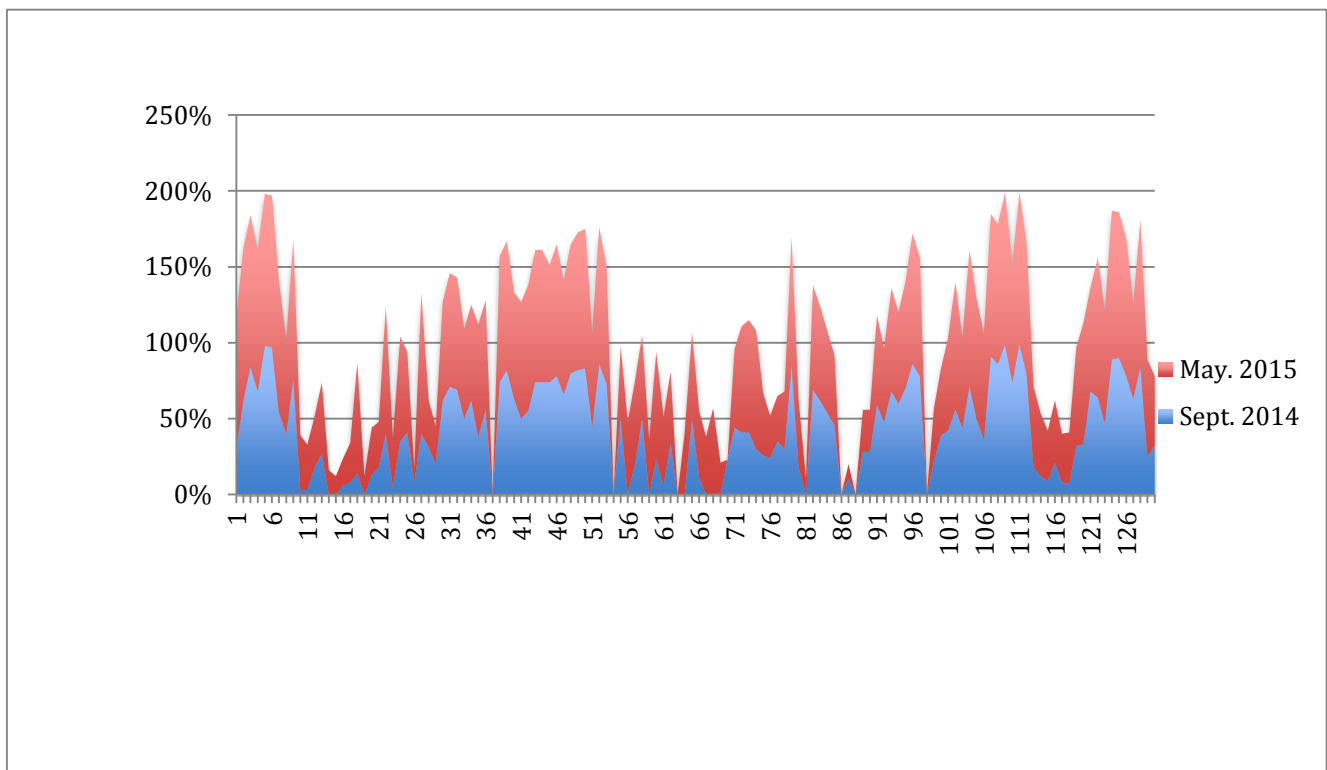


EEO students proud of their successful project completion.

I. Improvement Chart:

This chart indicates the progress made individual children in the EEO program. The names are not indicated but each set of before and after lines (red and blue) represent an individual child's progress. The scores reflect, in percentages, each child's mastery level of the Reading Assessment.

Not all children were represented because this is a reading assessment that is not applicable to the more severely delayed EEO students. Those children with more severe impairments that were not applicable for this assessment have been given more in depth assessments by members of the interdisciplinary team (Pediatric neurologist, speech therapist, occupational therapist).



J. Donors 2014-2015

Founder's Circle

*Howard and Martha Simpson
Samara Fund
Stuart and Elizabeth Eichner
The Muir House Foundation
Ella George Children's
Foundation
Tanya and John Crone
Drexler Family Foundation
Miller Family
Claudia and Michael Taglich
Stuart and Elizabeth Eichner
Tricia and Gil Besing
Don and Michele Soffer
The Newman Foundation
Diane Kent
Pamela Howard Foundation
Julie Lightbourne
Branche Lubart
Kyle and Holly Creed
George Lindemann
Jacqueline Bacerra
Mark Ingraham
Hallingby Family Foundation
Mary Louise Croftin –Atkins
Fidelity Charitable Gift Fund
Kateri and Chris Dodson
Ariel Reines
Jennifer Kalk
Toby Dunn*

In-Kind Contributors:

Charlotte and Ben Simmons
Blue Rooster
Jane and Stuart Warren
Fast Ferry
Valentines Dive Shop
Emily DeLiddo
Susy Siel –Freedom to Read
Foundation
Bacardi
Bristol Cellars
Royal Bank of Canada
George Robert s Library
Brigit Runyon
Jay Goodrich
Rexford Trudell
Blanche Lubart
Tracey Willey
Kyle and Holly Creed
Julie Therlaut
Kera Hoffman
Adelaide and Brendan Andrews
Ann Lenane Cutbill
Michael and Claudia Taglich
Edgar Seligman
Ann Helmus
Barbara Dalton
Jane Fincher
Hiho Batik

Kim Bishop
Jo Ann Mathieu
Blue Rooster
Kirk Davy
Matt Hoopes
Anita Kavali
Ropelwski Family
Trudell Family
Chris and Mary Collins
Robert Arthur
Dunmore rentals
Griffith Family
Lynn Nobles
The Cove
Coral Sands
Toby Dunn
Peter Croftin-Atkins
Elizabeth Barry
Stephen Scott Young
Princess Street Art Gallery
Daniel Caldwell
Laura Dodge
Jean Luc Fievet
Sidney Torres
Maurice White
Barrera Family
Rick Aruzza



Maureen Keonig, EEO teacher
individualizing instruction for
student at Governors Harbor
Primary

K. Budget for upcoming School Year

Costs of each EEO Resource Room established within a Bahamian public school
 (For operation 5 days a week~ 1 complete school year)

Educational Materials ----- (school supplies, learning games, computer learning programs, books, workbooks, and photocopies)	\$2,000
Center Maintenance ----- (paint, cleaning equipment, decorations, and repair)	\$ 500
Teacher stipend ----- \$50 a day x 9 months/one school year (covers basic cost of living, utilities):	\$11,000
Transportation ----- (gas, reimbursements, water taxis, rental cars, taxis, airfare)	\$3,000
Seminars/Parents workshops/Professional Development ----- (teacher training seminars and parent workshop supplies/transportation costs)	\$3,000
Therapist Visits ----- (This includes travel of therapist, reduced fees for evaluations or follow-up visits for average of 10 students per center/school for students in need of more in-depth assessments and therapy for speech, physical or neurological impairments.)	\$2, 800
Classroom nutrition ----- (water, fruit snack)	\$700
Administration Costs ----- (accounting, office supplies, IRS dues)	\$2,000

Yearly Total: \$25,000

***Complete expenditures for 2014 available upon request**

Total for 5 centers: \$150,000



Field trip to the Jazz Festival was a huge inspiration for the children who had the chance to interact with the musicians and instruments. Pictured here :EEO students from Bluff with their EEO teacher Jennie Charles and EEO Director , Lang.

L. Our 2015-16 goals include:

- Continued auditory and visual testing of students across all 3 districts of Eleuthera.
- Expansion of the Harbour Island resource center to better house the dual high school and primary program's pull-out sessions as well as a library of professional texts and resources to be shared with local Ministry teachers.
- Return of high calibre seminar presenters across the year including The Hawn Foundation MindUp program, Emily DeLiddo Reading and Writing Workshop, Toby Karten on Inclusion and Differentiation
- Continued collaboration with other local educational organizations to create joint efforts across multiple age groups toward academic and artistic pursuits.
- Increased parent workshops and incentives to drive participation and engagement at home.



15 Ways to Support EEO For Our 15th Year Anniversary

- 1 Sponsor a specific school's EEO center (\$25,000 a year)
- 2 Join our Founders' Circle sustaining EEO's programs (\$10,000)
- 3 Donate your appreciated stocks at year's end through EEO's brokerage account (*contact EEO Director, Lang Hudepohl at EEOBahamas@yahoo.com*)
- 4 Sponsor therapist visits for a year (\$5,000)
- 5 Sponsor two students' annual services (\$2,500)
- 6 Make a teacher training seminar happen! (\$2,000)
- 7 Donate a vehicle for transporting educators/therapists across long Eleuthera!
- 8 Support students in need of therapist services by underwriting a one-time visit (\$1,000)
- 9 Send us your refurbished used laptops or tablets. They are a great classroom tool!
- 10 Visit [Amazon.com](https://www.amazon.com) and search for "EEO Wish List" and help donate books/supplies
- 11 When ordering your own holiday gifts with [Amazon.com](https://www.amazon.com), consider selecting purchases through AmazonSmile ([smile.amazon.com](https://www.smile.amazon.com)) to benefit *Exceptional Education Outreach* where a percentage of purchase automatically is donated to EEO
- 12 Tell a friend about EEO and sign them up for our newsletter by sending their email address to EEOBahamas@yahoo.com
- 13 Share our information with friends and colleagues who may have foundations that fund and support educational programs or put them in touch with Lang at EEOBahamas@yahoo.com
- 14 Help connect us to therapists willing to donate their services
- 15 Come read a book to our students in our after-school program and see what Exceptional Education Outreach is at its very best!

Thank you for your support and care. Please contact us with any questions.